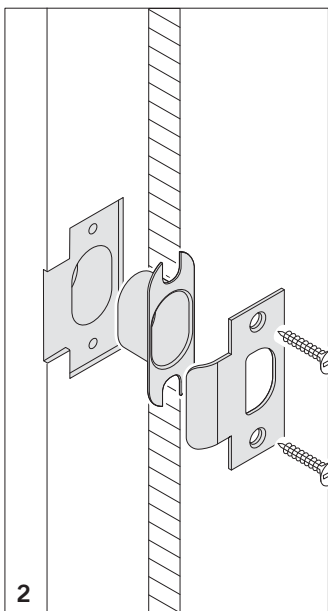
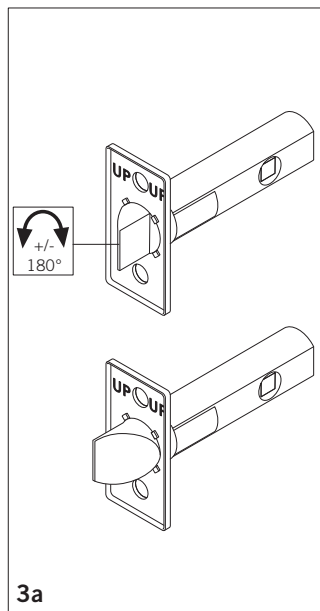


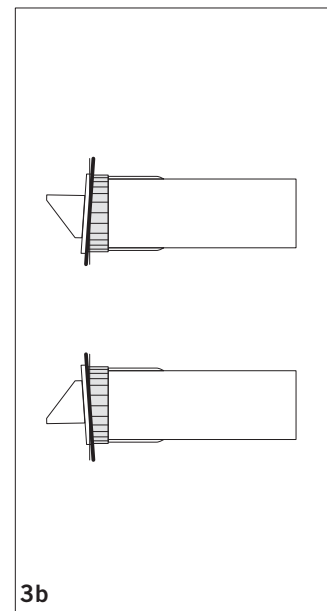
**Illustration 1**  
Prepare door using the proper FSB drilling template for Series HLL 7130 Latch, Function C, Trim Set RD.



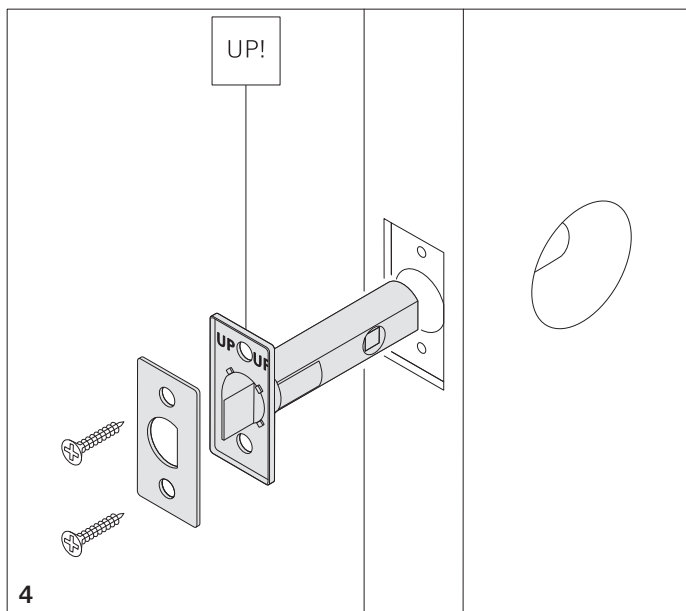
**Illustration 2**  
Prepare frame using the proper FSB Strike installation template for the HLL 1001 Strike and install with two screws as illustrated.



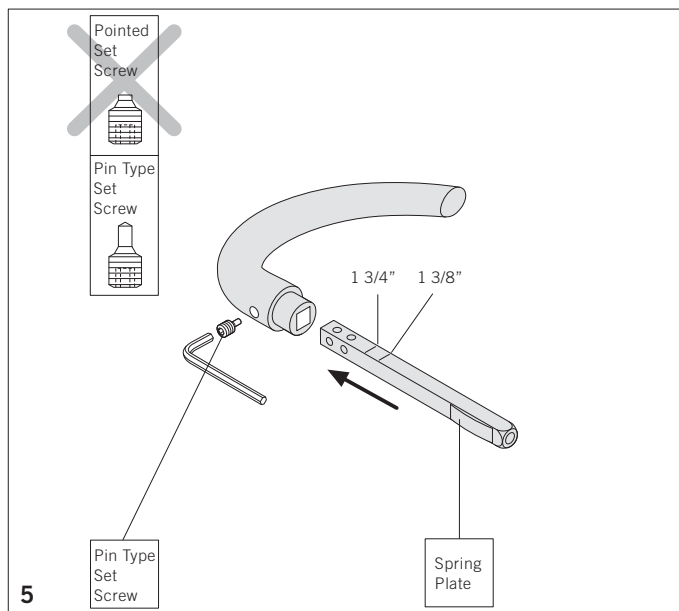
**Illustration 3a**  
Adjust latch bolt for right or left hand door by simply rotating it 180°.



**Illustration 3b**  
Latch front plate is loose to allow it to be positioned for flat or bevel edged door.

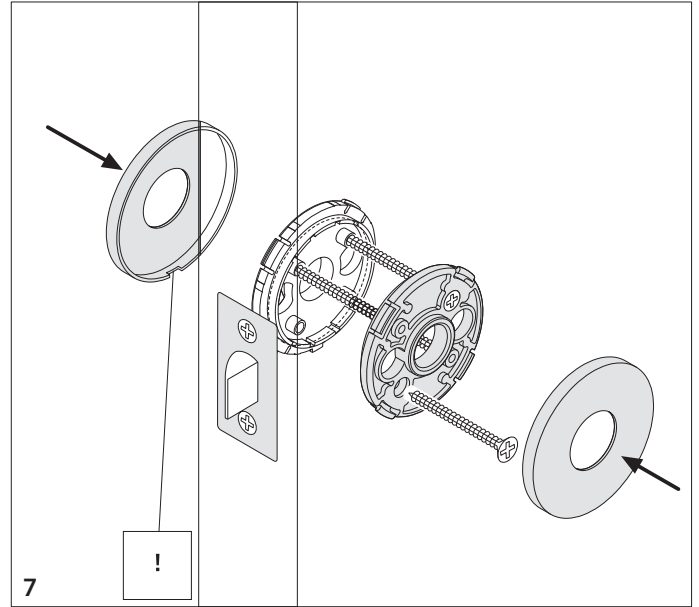
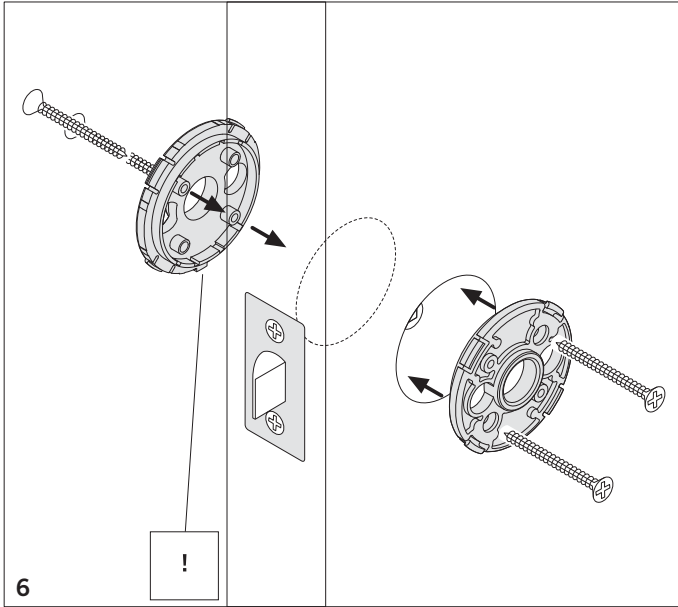


**Illustration 4**  
Insert latch into door preparation and position latch front plate for flat or bevel edged door. Secure using two screws through the face plate. Ensure proper orientation (UP) of the front plate as illustrated.



**Illustration 5**  
Insert the pin hole end of the FSB straight spindle into the neck of an FSB lever handle up to the line indicating the proper door thickness. The spring plate on the opposite end of the spindle must be facing the same direction as the set screw in the lever handle as shown in the illustration. Then insert and tighten the pin type set screw (supplied with the straight spindle) until the head of the set screw is flush with the

surface of the lever handle shank. Ensure that the spring plate on the spindle is facing the edge of the door to receive the opposite lever handle and pointed set screw.

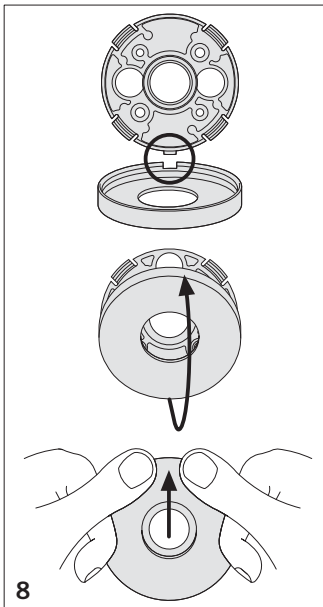


**Illustrations 6 and 7**  
Proper orientation of the sub-roses is very important. Install the plastic sub-roses on both sides of the door. Ensure that the two large holes are on the sides and the tab is pointing downwards as shown in Illustration 6. Fasten using the four screws provided, two from

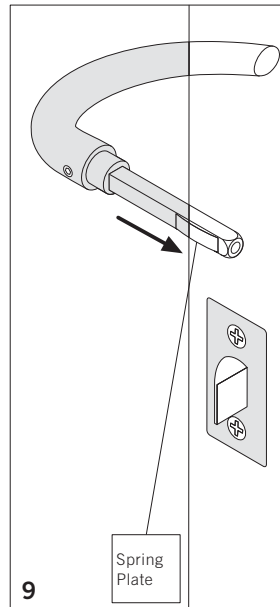
each side engaging the opposite side sub-rose as illustrated. Prior to fully tightening the sub-roses use the lever/spindle assembly as a tool to center the sub-roses. Insert the lever/spindle assembly through the latch hub and move the sub-roses as required to make sure they are centered with

respect latch hub (to avoid binding). The lever neck should slide freely into the sub-rose on each side. Once the sub-roses are properly centered, tighten them. Ensure that the screw tips enter the Lugs on the opposite sub-rose. When tightening screws, make sure they are snug so that the

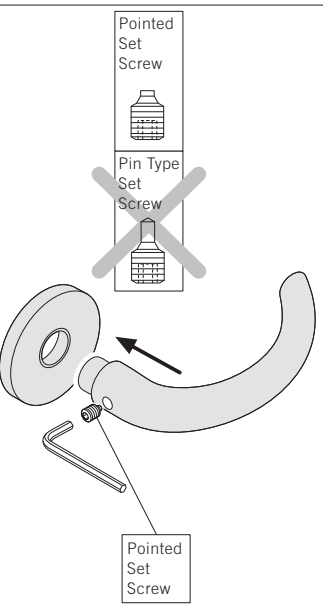
sub-rose is flat on the surface of the door. If the sub-rose is not drawn down tight against the surface of the door, you may have missed the Lug.



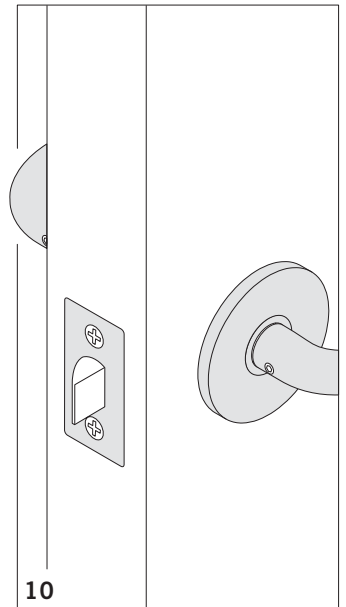
**Illustration 8**  
Attach the 65 mm x 7 mm decorative rose at the bottom of each sub-rose and press on to cover as illustrated.



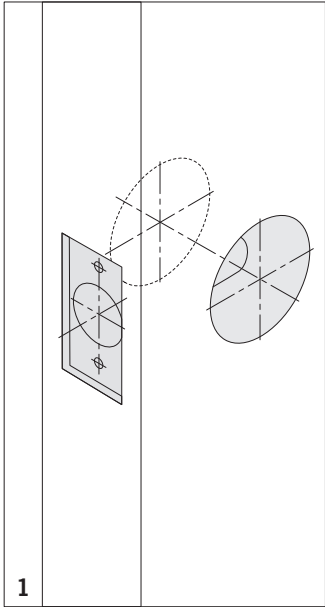
**Illustration 9**  
Insert the FSB lever handle/spindle assembly through the latch and attach the second FSB lever handle on the opposite side of the door. Insert and tighten the pointed set screw (supplied with the lever handle) until the head of the set screw is flush with the surface of the



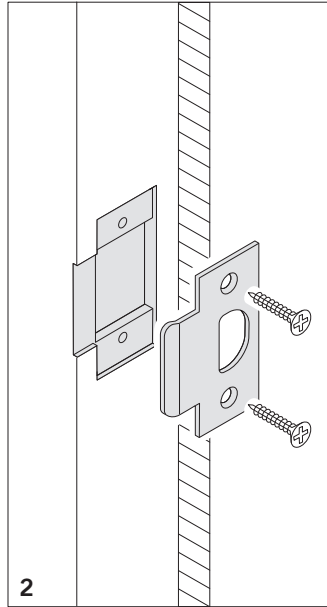
lever handle shank. **Ensure that the pointed set screw has punched the steel spring plate on the spindle.** Note that the set screw will meet resistance as it presses against the steel spring plate. Continue to tighten until the pointed set screw punctures the steel spring plate.



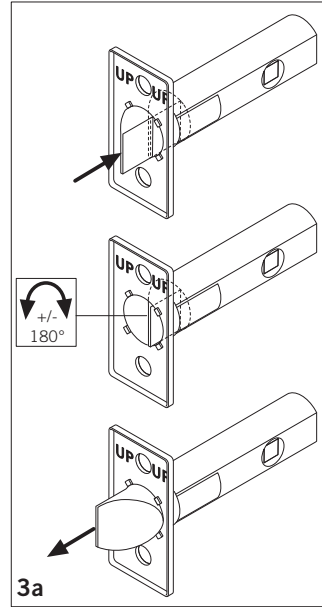
**Illustration 10**  
Verify the proper functioning of the lever handles with the latch. If necessary, dis-assemble and re-center the sub-roses to ensure proper function without binding.



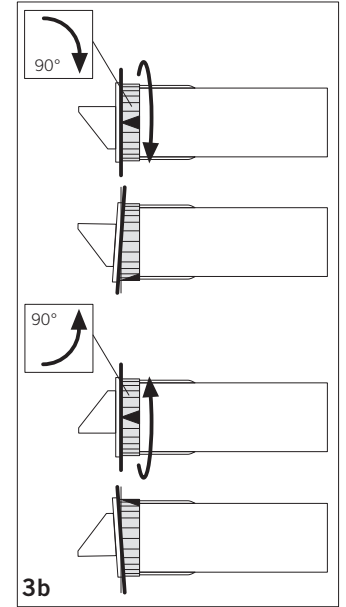
**Illustration 1**  
Prepare door using the proper FSB drilling template for Series HLL 7010 Latch, Function CU and Trim Set RD.



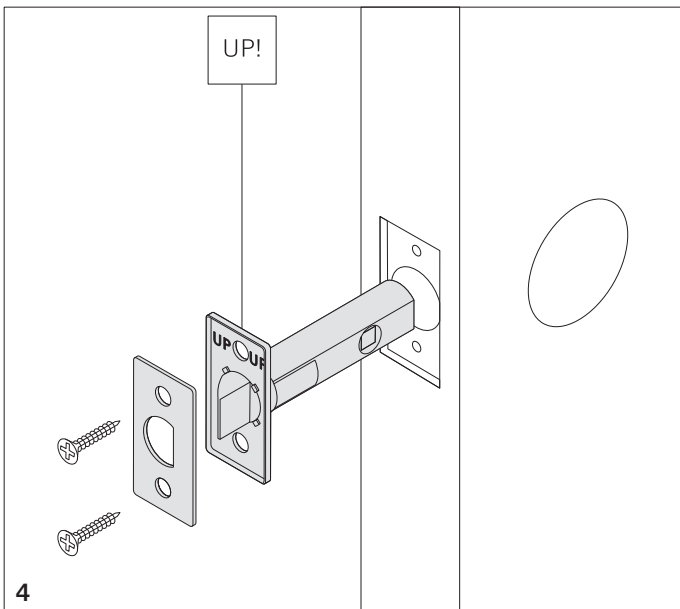
**Illustration 2**  
Prepare frame using the proper FSB Strike installation template for the HL 1001 and install with two screws as illustrated.



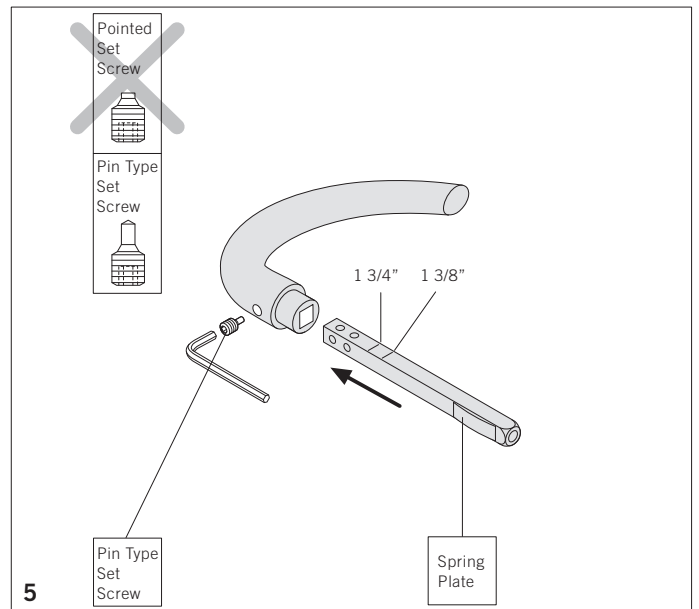
**Illustration 3a**  
Adjust latch bolt for right or left hand door by pushing it inside the latch and rotating.



**Illustration 3b**  
Adjust latch front for flat or bevel edged door by rotating the red adjustment ring as illustrated.



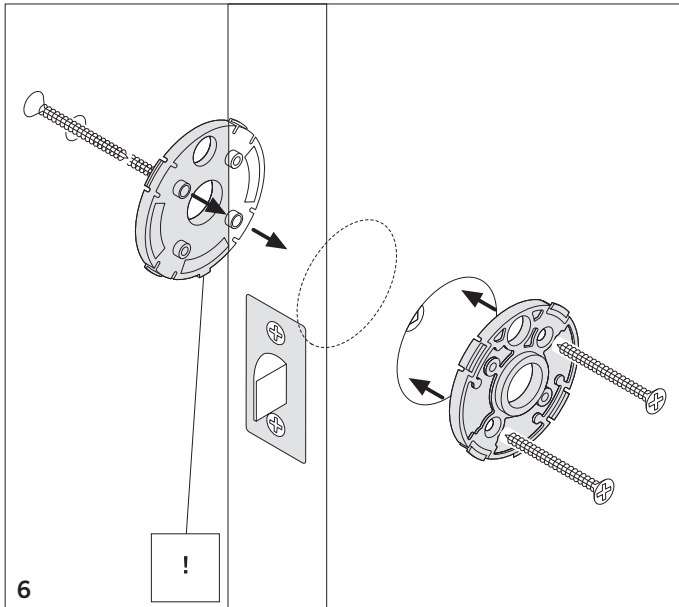
**Illustration 4**  
Insert latch into door preparation and secure using two screws through the face plate. Ensure the proper orientation (UP) of the front plate as illustrated.



**Illustration 5**  
Insert the pin hole end of the FSB straight spindle into the neck of an FSB lever handle up to the line indicating the proper door thickness. The spring plate on the opposite end of the spindle must be facing the

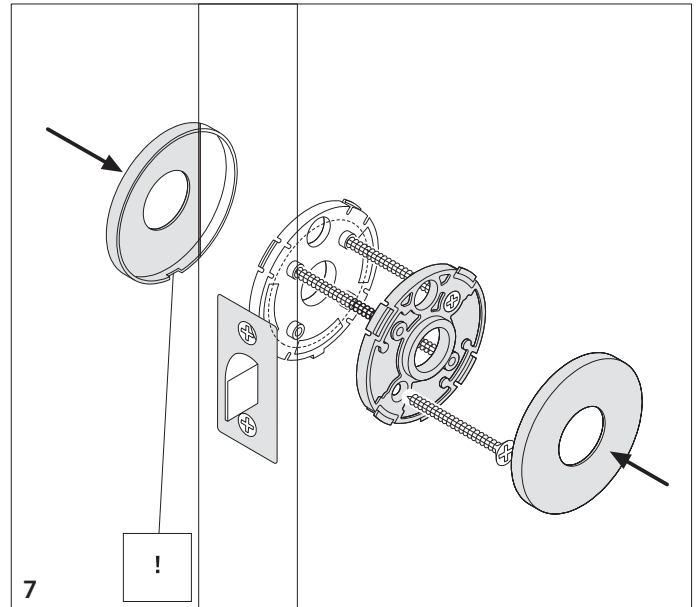
same direction as the set screw in the lever handle as shown in the illustration. Then insert and tighten the pin type set screw (supplied with the straight spindle) until the head of the set screw is flush with the

surface of the lever handle shank. Ensure that the spring plate on the spindle is facing the edge of the door to receive the opposite lever handle and pointed set screw.



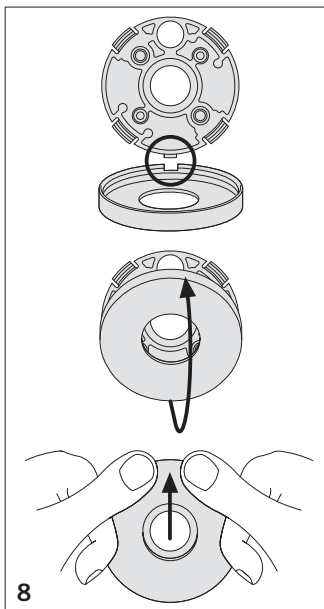
**Illustrations 6 and 7**  
Proper orientation of the sub-roses is very important. Install the plastic sub-roses on both sides of the door. Ensure that the large hole is placed on top and the tab is pointing downwards as shown in Illustration 6. Fasten using the four screws provided, two screws

from each side engaging the opposite side sub-rose as illustrated. Make sure that the screw tips enter the Lugs on the opposite sub-rose. If the sub-rose is not drawn down tight against the surface of the door when you tighten the screws, you may have missed the lug. If you miss, try again

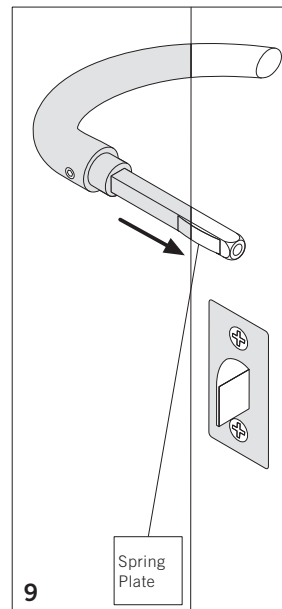


until screws are properly positioned. Prior to fully tightening the sub-roses, use the lever/spindle assembly as a tool to center the sub-roses. Insert the lever/spindle assembly through the latch hub and move the sub-roses as required to make sure they are centered with respect to the latch hub (to avoid

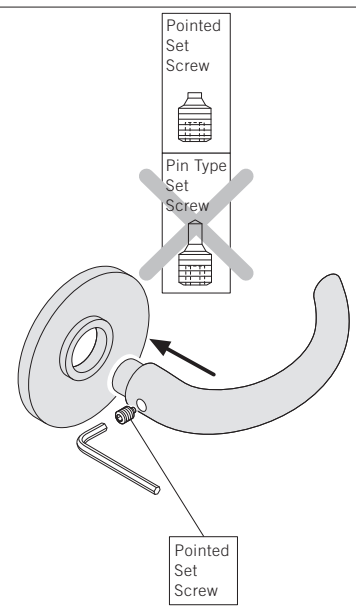
binding). The lever neck should slide freely into the sub-rose on each side. Once the sub-roses are properly centered, tighten them. When tightening screws make sure they are snug so that the sub-rose is flat on the surface of the door.



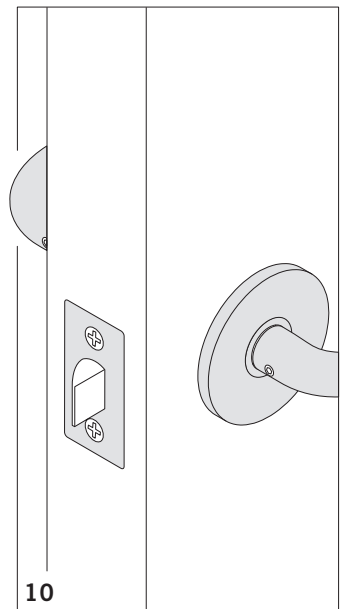
**Illustration 8**  
Attach the 65 mm x 7 mm decorative rose at the bottom of each sub-rose and press on to cover as illustrated.



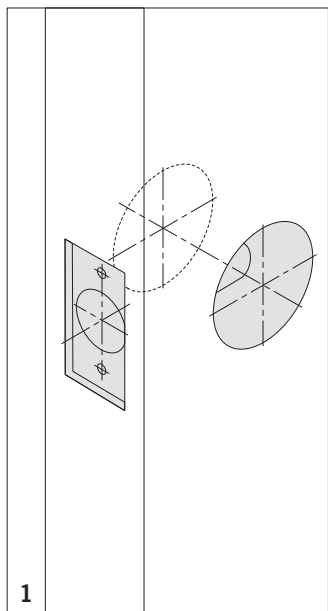
**Illustration 9**  
Insert the FSB lever handle/spindle assembly through the latch and attach the second FSB lever handle on the opposite side of the door. Insert and tighten the pointed set screw (supplied with the lever handle) until the head of the set screw is flush with the surface of the



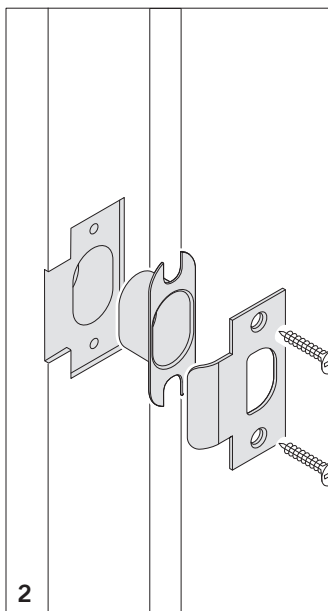
lever handle shank. **Ensure that the pointed set screw has punched the steel spring plate on the spindle.** Note that the set screw will meet resistance as it presses against the steel spring plate. Continue to tighten until the pointed set screw punctures the steel spring plate.



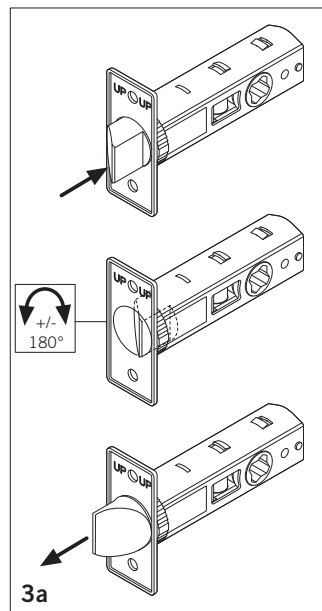
**Illustration 10**  
Verify the proper functioning of the lever handles with the latch. If necessary, dis-assemble and re-center the sub-roses to ensure proper function without binding.



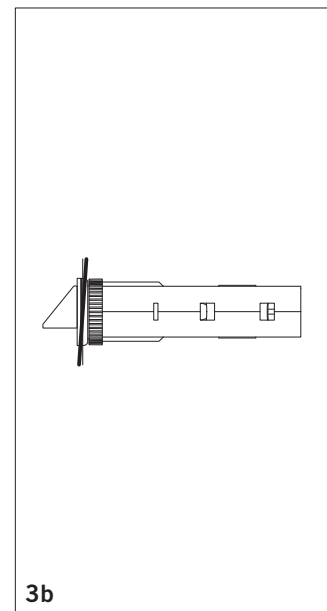
**Illustration 1**  
Prepare door using the proper FSB drilling template for Series HLL 7140 Latch, Function E, Trim Set RD. Note: Trim Set RD is limited to 1 3/8" - 2 1/4" thick doors only.



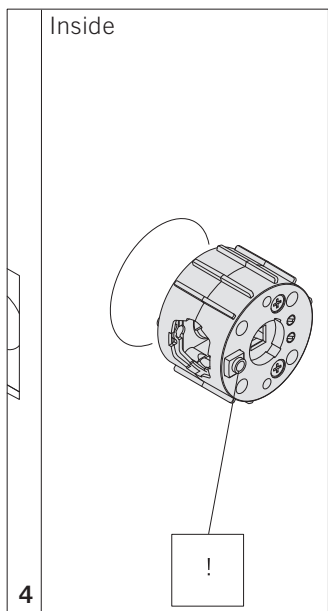
**Illustration 2**  
Prepare frame using the proper FSB Strike installation template for the HLL 1001 Strike (with the proper lip to center dimension) and install with two screws as illustrated.



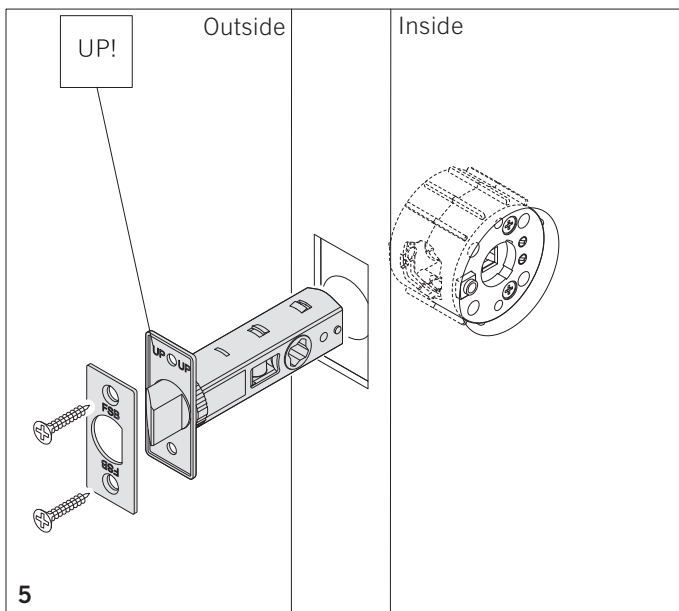
**Illustration 3a**  
Adjust latch bolt for right or left hand door by pushing it inside the latch and rotating.



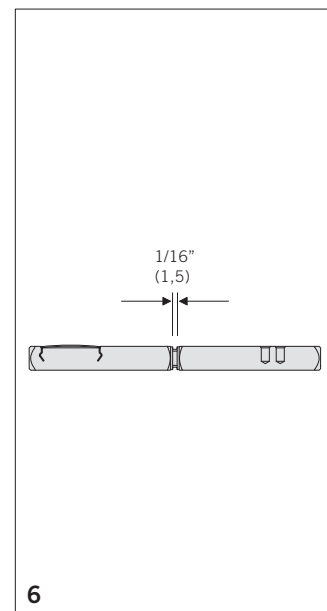
**Illustration 3b**  
Latch front plate is loose to allow it to be positioned for flat or bevel edged door.



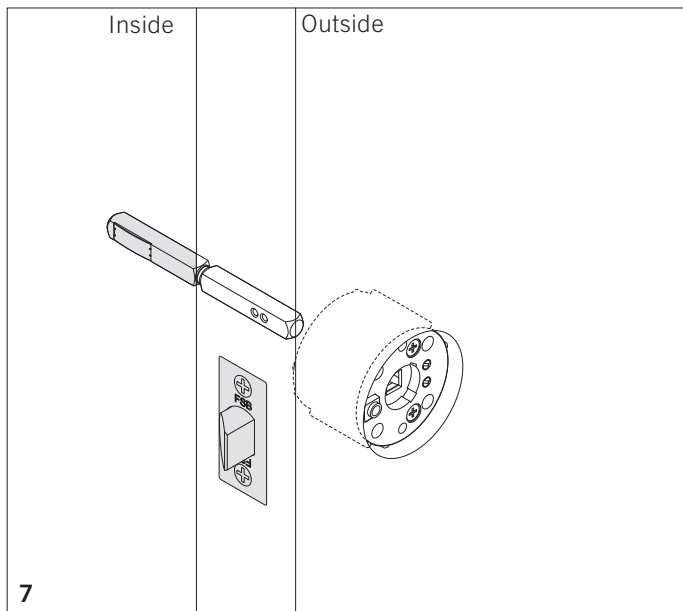
**Illustration 4**  
Insert Privacy Mechanism HLL 7141 into the 2 1/8" hole with the thread-ed block for the push pin positioned on the inside of the door and to the edge of the door.



**Illustration 5**  
Install latch into door preparation and through the Privacy Mechanism. Position the latch front plate for flat or bevel edged door. Ensure proper orientation (UP) of the front plate as illustrated. Secure using two screws through the face plate.

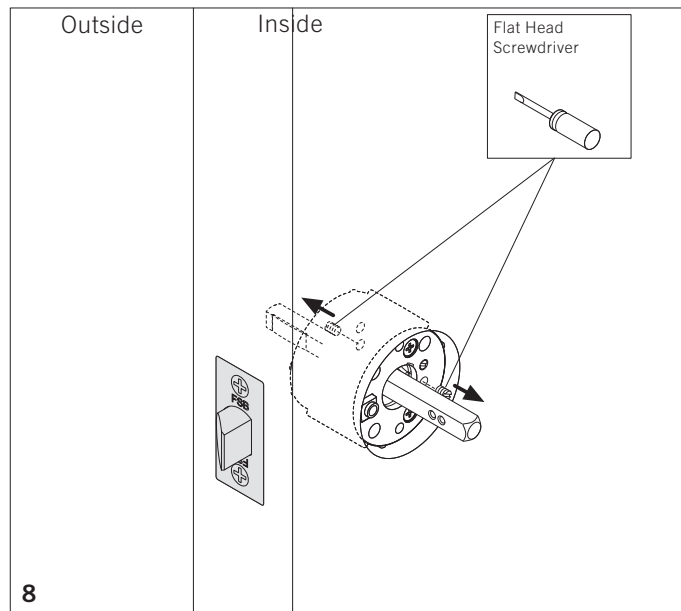


**Illustration 6**  
**Important:** Before inserting swivel spindle you must ensure that the two halves of the swivel spindle are separated by at least one full turn, so the two halves can rotate without restriction.

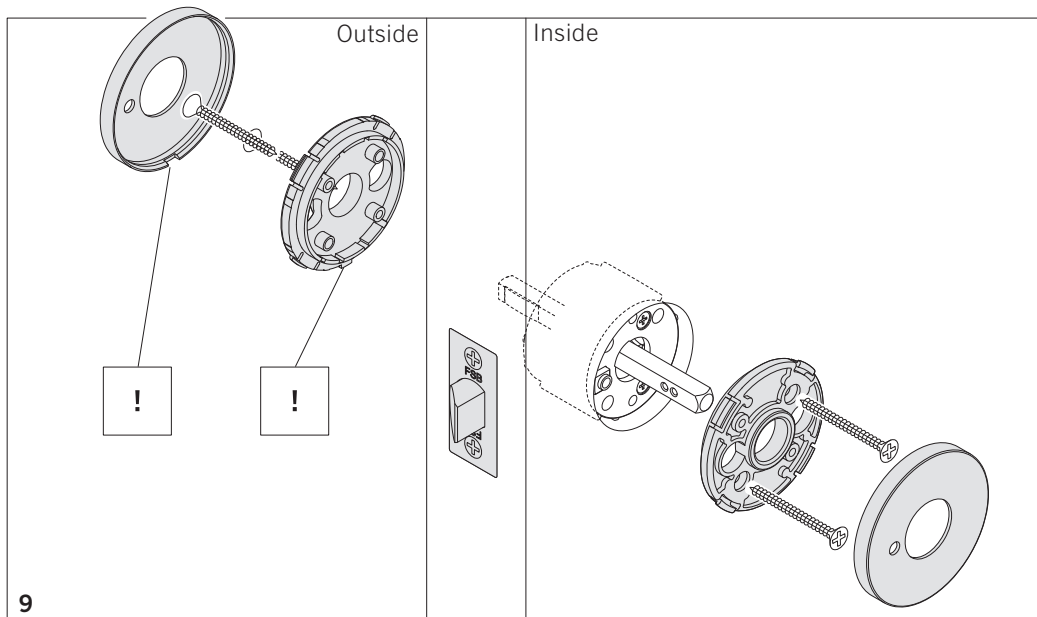


**Illustration 7**  
Insert the pin hole side of the spindle through the latch from the inside of the door until the spindle is approximately centered in the latch.

**Ensure that the spring plate and pin holes are facing the door edge.**



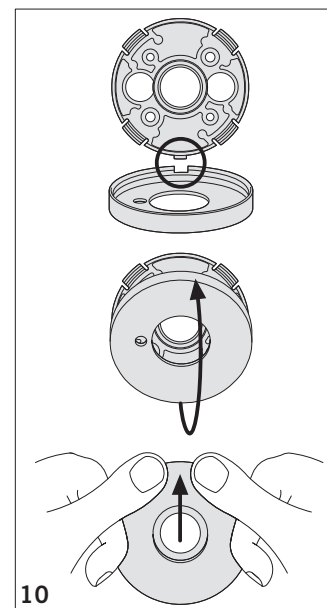
**Illustration 8**  
Remove bottom screw on both sides.



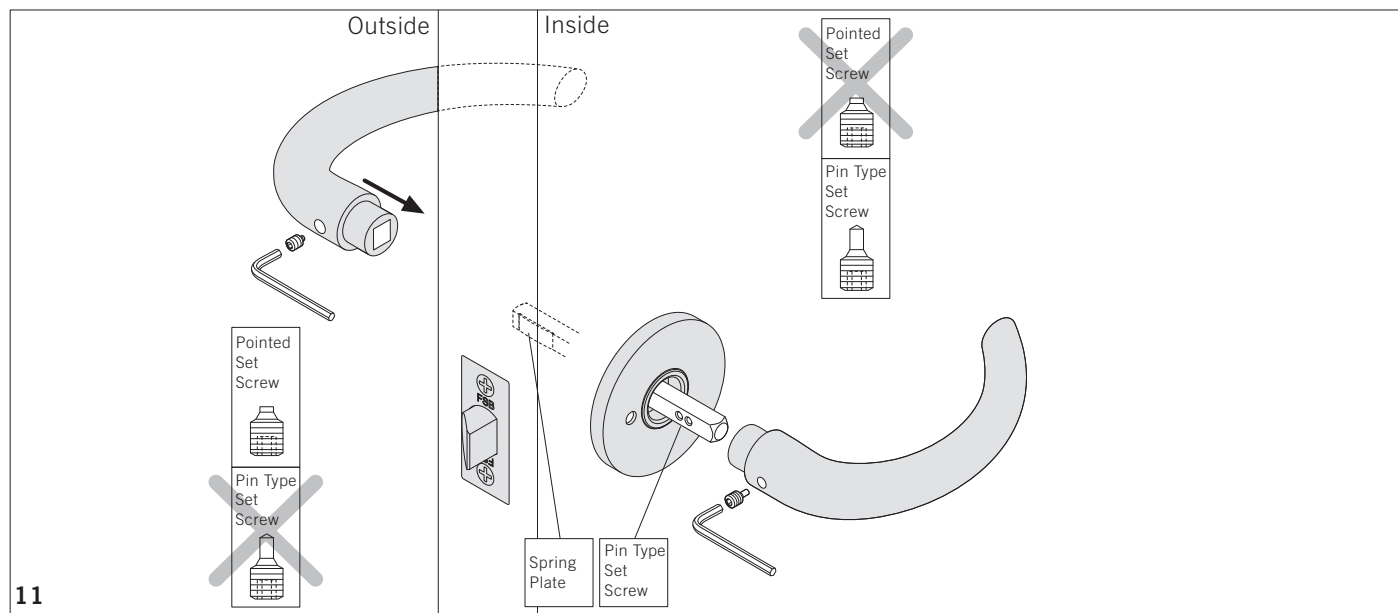
**Illustration 9**  
Proper orientation of the sub-roses is very important. Install the plastic sub-roses on both sides of the door. Ensure that the large holes are placed on the side and the tab is pointing downwards as shown. Temporarily place levers on the spindle to align the sub-roses

correctly before fastening. The lever neck should slide freely into the sub-rose on each side. Fasten sub-roses using the four screws provided, two screws from each side engaging the opposite side sub-rose as illustrated. Ensure that the screw tips enter the lug holes on the

opposite sub-rose. Note: If the sub-rose is not drawn down tight against the surface when you tighten the screws, you may have missed the lug hole. Once the sub-roses are aligned and secured, remove levers.



**Illustration 10**  
Attach the 65 mm x 7 mm decorative rose at the bottom of each sub-rose and press on to cover as illustrated.



**Illustration 11**

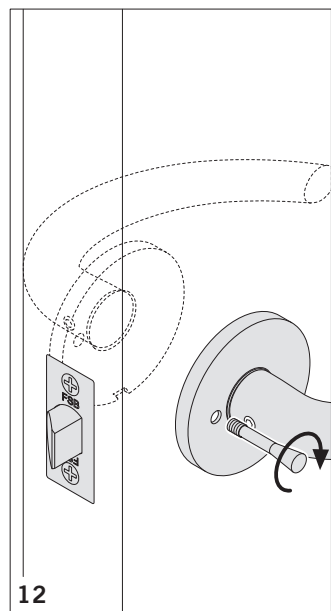
Insert the pin hole end of the spindle into the neck of an FSB inside lever handle up to the line indicating the proper door thickness. Then insert and tighten the pin set screw (supplied with the swivel spindle) until the head of the set screw is flush with the surface of the lever

handle shank. Push the lever/spindle assembly into the latch hub until the neck of the lever meets the collar of the plastic sub-rose. Slide the other FSB lever handle onto the spring plate on the opposite side of the spindle until the neck of the lever meets the collar of the

plastic sub-rose. The swivel spindle should now be centered in the latch and Privacy Mechanism which will allow it to operate properly. Depress levers to check operation then continue to tighten set screw. Note that the set screw will meet resistance as it presses

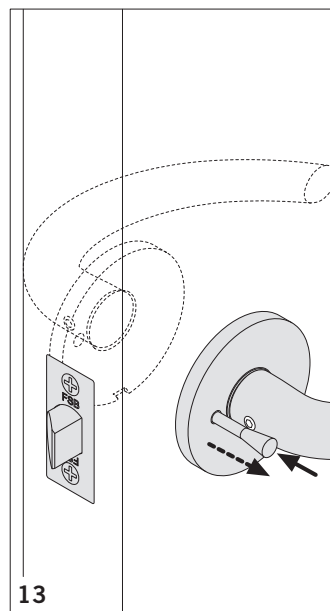
against the steel spring plate. Tighten until the set screw punctures the steel spring plate.

**Ensure that the pointed set screw has punched the steel spring plate on the spindle.**



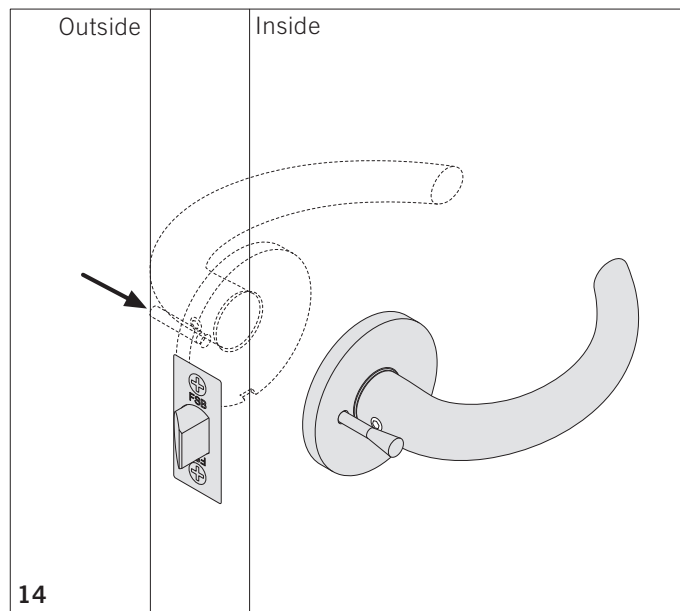
**Illustration 12**

Screw the push pin (through the hole) into the M5 threaded insert in the sub-rose.



**Illustration 13**

Push the pin in to lock the door. Unlocking is done automatically when you press the lever handle down.



**Illustration 14**

For emergency release; insert a 4 mm (5/32") diameter pin through the hole in the outside lever rose and push to release the locking mechanism.